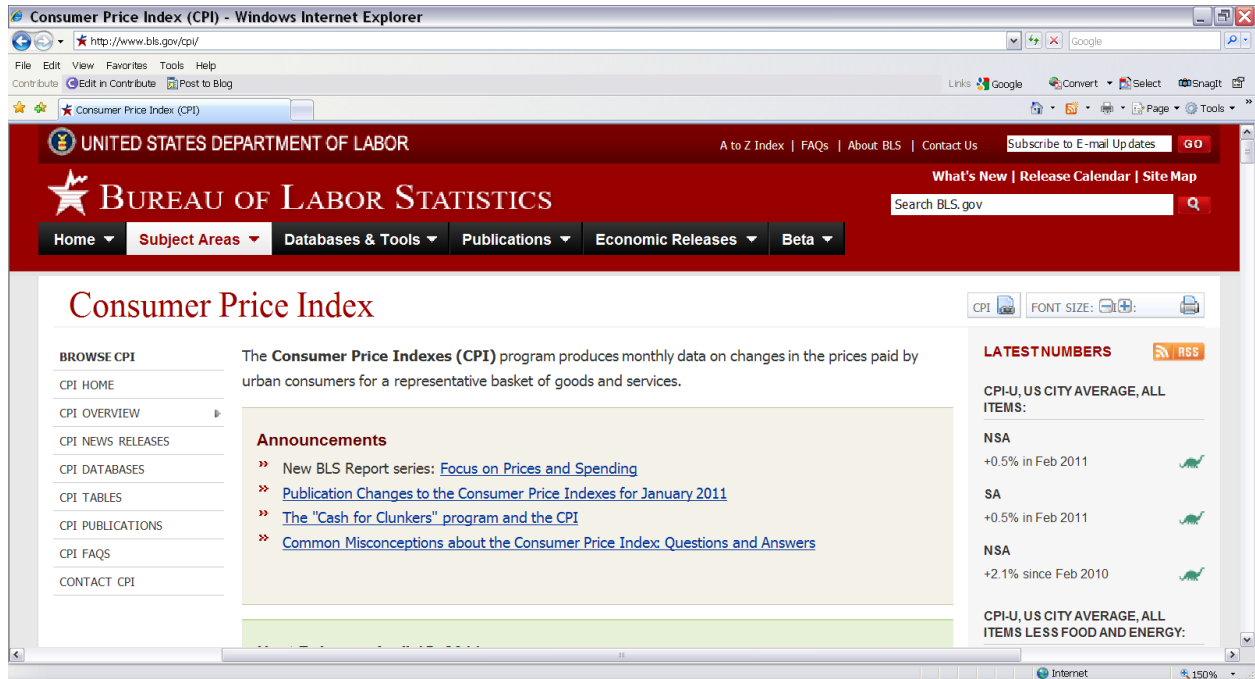
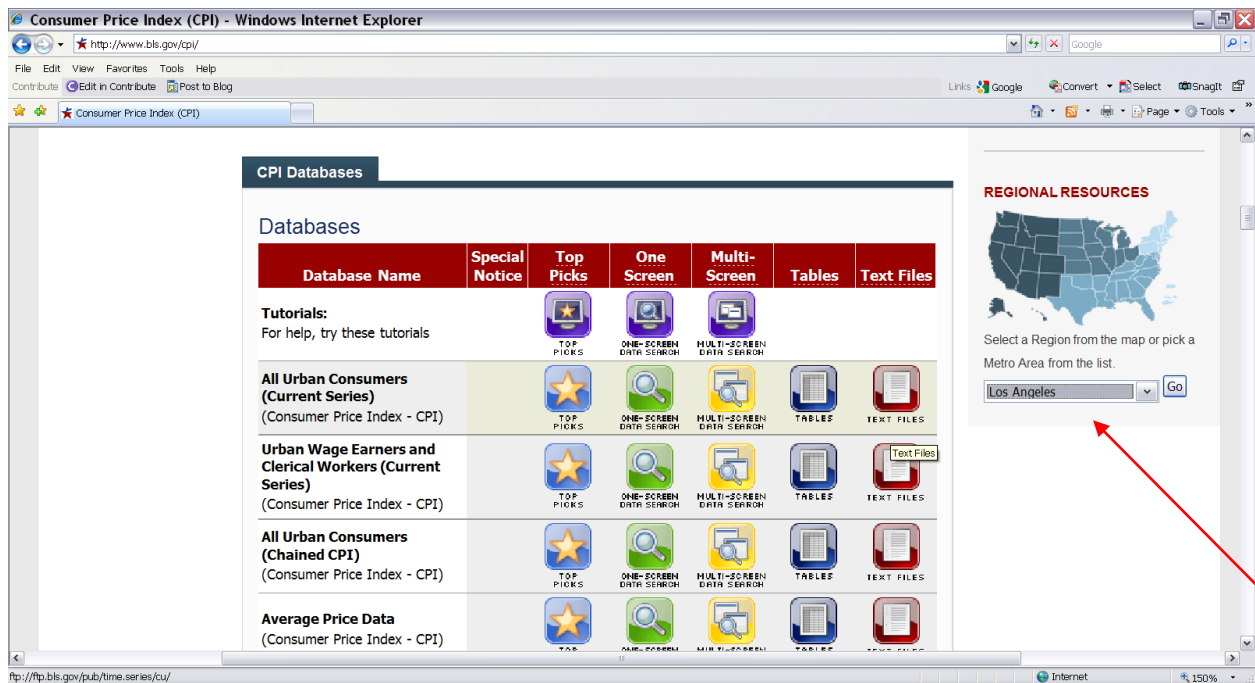


How to Access CPI Data

Step 1 Go to the Bureau of Labor Statistics Web site: www.bls.gov/cpi.



Step 2 Scroll down and on the right hand side, select "Los Angeles" in the drop-down menu under the map of states, and click "Go".



Step 3 On the next screen, click on “More Formatting Options” .

The screenshot shows the Bureau of Labor Statistics website in Internet Explorer. The page title is "Databases, Tables & Calculators by Subject". Below the navigation bar, there are "Change Output Options" with a "From" dropdown set to 2001 and a "To" dropdown set to 2011. A "More Formatting Options" link is highlighted with a red arrow pointing to it from the right side of the page.

Consumer Price Index - All Urban Consumers

Series Id: CUURA421SA0, CUUSA421SA0
 Not Seasonally Adjusted
 Area: Los Angeles-Riverside-Orange County, CA
 Item: All items
 Base Period: 1982=84=100

Download: [.xls](#)

Year	Jan	Feb	Mar	Apr	May	Jun	Jul	Aug	Sep	Oct	Nov	Dec	Annual	HALF1	HALF2
2001	174.2	175.4	176.2	176.6	177.5	178.9	178.3	178.4	178.8	178.3	178.1	177.1	177.3	176.5	178.2
2002	178.9	180.1	181.1	182.2	182.6	181.9	182.2	183.0	183.4	183.7	184.0	183.7	182.2	181.1	183.3

Step 4 Now select the following options:

- Check the box, “12 Months Percent Change”
- Specify year range, (select the year prior and the current calendar year)*
- Click on “Select one time period” and select “February”
- Click “Retrieve Data”

The screenshot shows the "Formatting Options" page. It has several sections:

- Select view of the data:** Includes "Table Format", "Column Format", and "Multi-series table". Under "Original Data Value", the "12-Month Percent Change" checkbox is checked. A red arrow labeled 'a.' points to this checkbox.
- Select the time frame for your data:** Includes "All years", "All Time Periods", "Specify year range", and "Select one time period". The "Specify year range" option is selected, with "From" set to 2010 and "To" set to 2011. A red arrow labeled 'b.' points to the "To" dropdown. The "Select one time period" option is also selected, with "February" chosen from the dropdown. A red arrow labeled 'c.' points to the "February" selection.
- Output Type:** Includes "HTML table" (selected), "Text", and "comma delimited".
- Graphs:** Includes "Include graphs" checkbox.
- A "Retrieve Data" button is located at the bottom left. A red arrow labeled 'd.' points to this button.

At the bottom, it says: "The following series id(s) were generated from your query. To save these series id(s), cut and paste to a text file."

*For a historical comparison of the CPI and retiree COLAs, you may specify a range earlier than the current year.

Step 5 You will be given the CPI for Los Angeles, Riverside and Orange Counties. The resulting number is the retiree COLA for the coming fiscal year.

Consumer Price Index - All Urban Consumers

Series Id: CUURA421SA0, CUUSA421SA0
Not Seasonally Adjusted
Area: Los Angeles-Riverside-Orange County, CA
Item: All items
Base Period: 1982-84=100

Download: [.xls](#)

Year	Feb
2010	224.620
2011	229.729

12-Month Percent Change

Series Id: CUURA421SA0, CUUSA421SA0
Not Seasonally Adjusted
Area: Los Angeles-Riverside-Orange County, CA
Item: All items
Base Period: 1982-84=100

Download: [.xls](#)

Year	Feb
2010	1.4
2011	2.3

← Basis for 2010 Retiree COLA
← Basis for 2011 Retiree COLA