

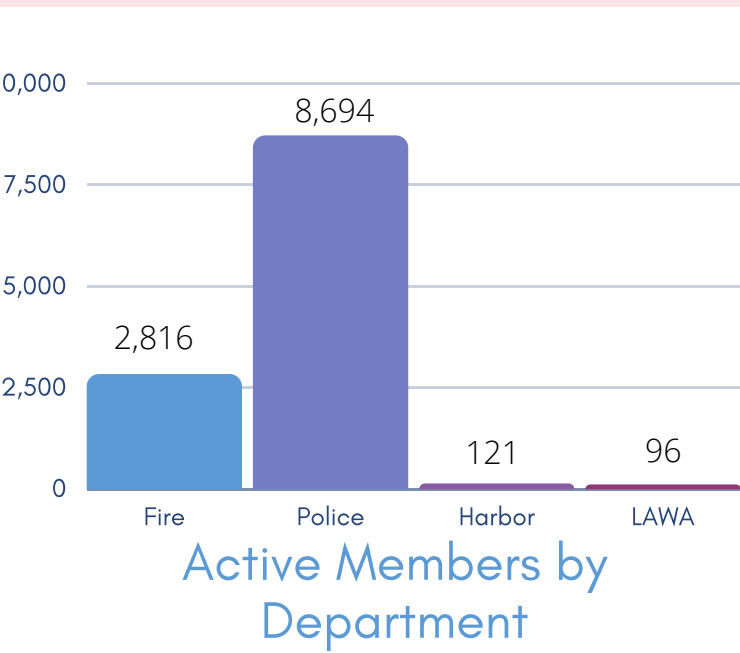
# QUARTERLY MEMBERSHIP DATA

Unaudited data ending 09/30/2020

**26,528**  
TOTAL MEMBERSHIP



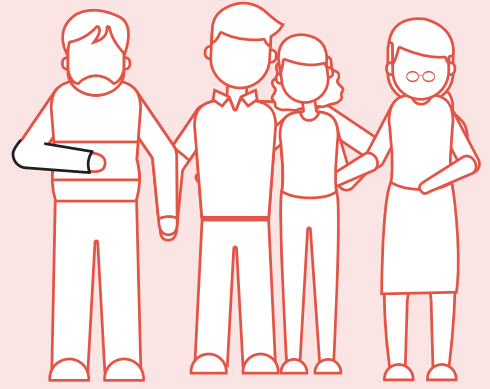
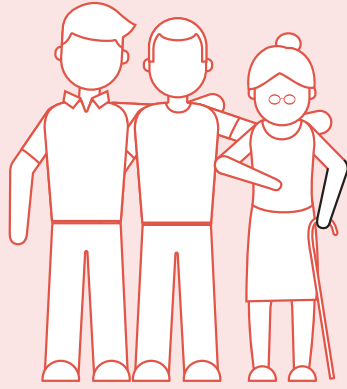
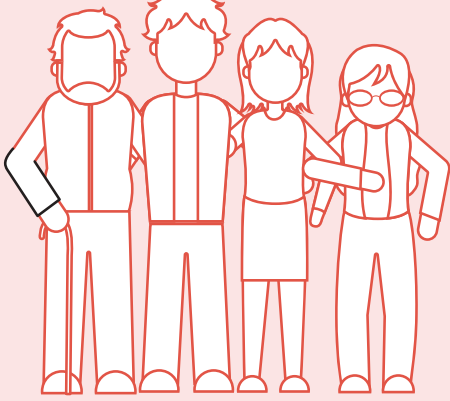
## 13,190 ACTIVE AND DROP MEMBERS



**648**  
Active Members eligible to enter DROP

**1,699**  
Active Members eligible to retire on a Service Pension

\*Not including DROP members



## 10,855 RETIRED MEMBERS

9,096 SERVICE PENSIONERS

1,759 DISABILITY PENSIONERS



## 2,483

### SURVIVOR PENSIONERS

A survivor pension is awarded to eligible qualified spouses, domestic partners, dependent children, and/or dependent parents

## TOTAL ANNUAL MEMBERSHIP

Audited data as of June 30, 2019

